

# Yamato®



# VFK2560-8

4 Needle 6 Thread Flatbed Flatseamer  
with Active Thread Control



ISO9001:2008  
JQA-QM6412

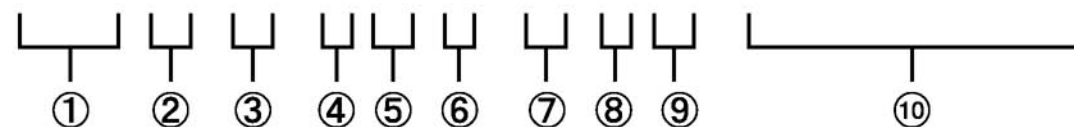
# Yamato®

# VFK2560-8

4 Needle 6 Thread Flatbed Flatseamer  
with Active Thread Control

■ Numbering on Model:

## VFK2560-152M-02M-8/K1/SC30/FL



- ① Symbol of Series
- ② Class No.
- ③ Submodel by Application
- ④ Top Cover Thread Mechanism : 1 = with Top Cover Thread Mechanism
- ⑤ Needle Distance : 52 = 5.2 mm , 60 = 6.0 mm
- ⑥ Shape of Stitch Tongue on Stitch Plate
- ⑦ Fabric Trimming Method : 02 = Both Cut
- ⑧ Applicable Fabric Weight : M = Lightweight to Mediumweight Fabric
- ⑨ Active Thread Control : -8 = with Active Thread Control
- ⑩ Device(s)

■ Specifications

MY1014H SAN10 4	6	5.2 6.0	1.4~3.6		1:0.6 ~ 1:1.6	5.0	31	4,200

■ Devices

- SC30** : Lint Collection Pipe (\*1)
- FL** : Air-operated Presser Foot Lifter
- K1** : Automatic Thread Chain Trimmer

(\*1) : SC30 is included as standard accessory.  
Separate Lint Collector is needed.

Specification and appearance on this catalogue are subject to change without notice.  
For correct handling of products described on this catalogue, please read instructions carefully before operation.

**YAMATO SEWING MACHINE MFG. CO., LTD.**  
http://www.yamato-sewing.com

**HEAD OFFICE**  
4-12, 4-CHOME, NISHI-TENMA, KITA-KU, OSAKA, 530-0047, JAPAN  
TEL:+81-6-6364-5621 / FAX:+81-6-6364-7185 / E-mail: export-dept@yamato-sewing.com

**YAMATO U.S.A. INC.** TEL:+1-803-548-0334 / FAX:+1-803-548-0405  
**YAMATO EUROPE GmbH.** TEL:+49-40-355347-0 / FAX:+49-40-354371 / E-mail: sales@yamato.de  
**YAMATO (HONG KONG) CO., LTD.** TEL:+852-2721-0251 / FAX:+852-2723-0444 / E-mail: yamato@yamato-sewing.com.hk  
**YAMATO (香港) 有限公司 东莞代表处** TEL:+86-769-6231363 / FAX:+86-769-6231362  
**大和缝纫机(宁波)有限公司** TEL:+86-574-86800518, 86800558 / FAX:+86-574-86800555 / E-mail: yamato@yamato-china.net  
**大和缝纫机制造株式会社 青岛事务所** TEL:+86-532-85783175 / FAX:+86-532-85783172  
**大和缝纫机制造株式会社 上海事务所** TEL:+86-21-64400017, -64400019 / FAX:+86-21-64400021  
**YAMATO SINGAPORE PTE LTD.** TEL:+65-6287-1955 / FAX:+65-6287-1028

**YAMATO SINGAPORE PTE LTD, INDIA LIAISON OFFICE, TIRUPUR MAIN BRANCH** TEL:+91-421-4333701 / FAX:+91-421-2235822  
**YAMATO SINGAPORE PTE LTD, INDIA LIAISON OFFICE, DELHI BRANCH** TEL:+91-11-5160-3280 / FAX:+91-11-5160-3281  
**YAMATO SINGAPORE PTE LTD, BANGLADESH LIAISON OFFICE** TEL:+880-28714581 / FAX:+88028714579

# Your Practical Solution for 4 Needle Flat Seaming Operation with Fabric Trimming, for Athletic Wear is Here!

# VFK2560-8

4 Needle 6 Thread Flatbed Flatseamer with Active Thread Control

## Why "Flatbed" Flatseamer?

Assembly of recent athletic wear, designed to be made with a lot of small parts, using feed-off-the-arm flatseamer, sometimes take huge downtime, as operators have to stop the machine frequently to pick up the work, which have been fallen from the cylinder.

### Yamato VFK brings you the solution!

Its flatbed improves productivity of such operations a lot, as the fabric is much more stable and easier to handle.



Feed-off-the-arm

Which looks faster & easier?



Flatbed

## Pucker-free

More reverse differential ratio than usual feed-off-the-arm flatseamer helps neat finish, especially in case of sewing along lengthwise grain of stretchable synthetic fabric.

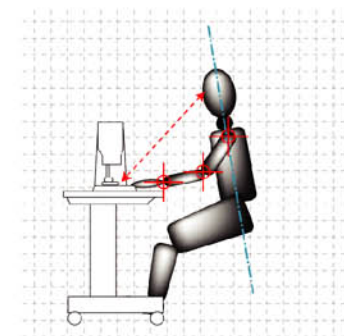
## Easy to be a Professional!

Thanks to easier and stress-free operation coming from:

- ▶ rather familiar machine shape
- ▶ natural posture for operation
- ▶ better sight at sewing area and the work

even your single needle lock stitch operator can make perfect flatseaming in a very short period of time.

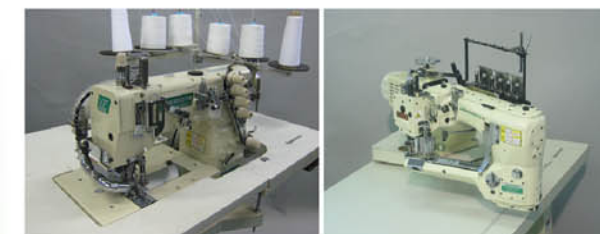
With Yamato VFK, you can be more flexible against variation of demands for flatseam.



## Recommended Combination

YAMATO VFK2560 for joining open pieces + YAMATO FD-62DRY, "Magic Dry" Feed-off-the-Arm Flatseamer for closing garments and/or 3D-curbs.

This is your "real solution" for recent increasing demands for garments with flatseam, using stretchable fabric!



## High Stretch!

"Active Thread Control" enables soft & stretchable (200%+) seam, suitable for performance athletic garments, without complicated adjustments, required for current machines.



200%+ stretch!

**By making the best use of YamatoVFK, which is easier in both operation and maintenance, You can add more value on your works!**

